



the art of natural sound

BEETHOVEN CONCERT GRAND *Symphony Edition*



Scale, power and grandeur are all conferred by its name. As with all models in the Concert Grand™ range, the composer name is selected based on the scale, complexity and power of performance for which they are best known.

The term Concert Grand, like the piano of the same designation, refers to its ability to deliver this level of performance in large concert halls and music rooms. The new 3-way Concert Grand *Symphony Edition* delivers far more than just power and scale. The careful listener will delight in the lucidity and clarity of the all-important middle ranges where virtually all instruments find their tonic origins.

Here it excels, with a natural ease, clarity and quietness where only a few much more expensive designs have tread. For a large-scale screening room or theater, the Concert Grand *Symphony Edition* delivers even the most demanding scenes with an ease that allows for deeper immersion into the film experience. A truly extraordinary product that will re-calibrate your expectations.

Beethoven Concert Grand *Symphony Edition* features our sophisticated neodymium tweeter, a descendant of our coax technology - a result of meticulous, permanent research and development.

Three 7" Spidercone bass drivers (or ULF, Ultra Low Frequency, drivers), feature a reworked motor assembly and revised placement of the XXP ribs, providing increased output, extension and control. The huge surface area that results from the use of three of these extraordinary drivers means effortless reproduction of extreme bass dynamics with articulation and force.

The veneers are as always, hand selected by us in Vienna. The true piano lacquers are only the highest quality available while adhering to the most stringent environmental standards of Western Europe.



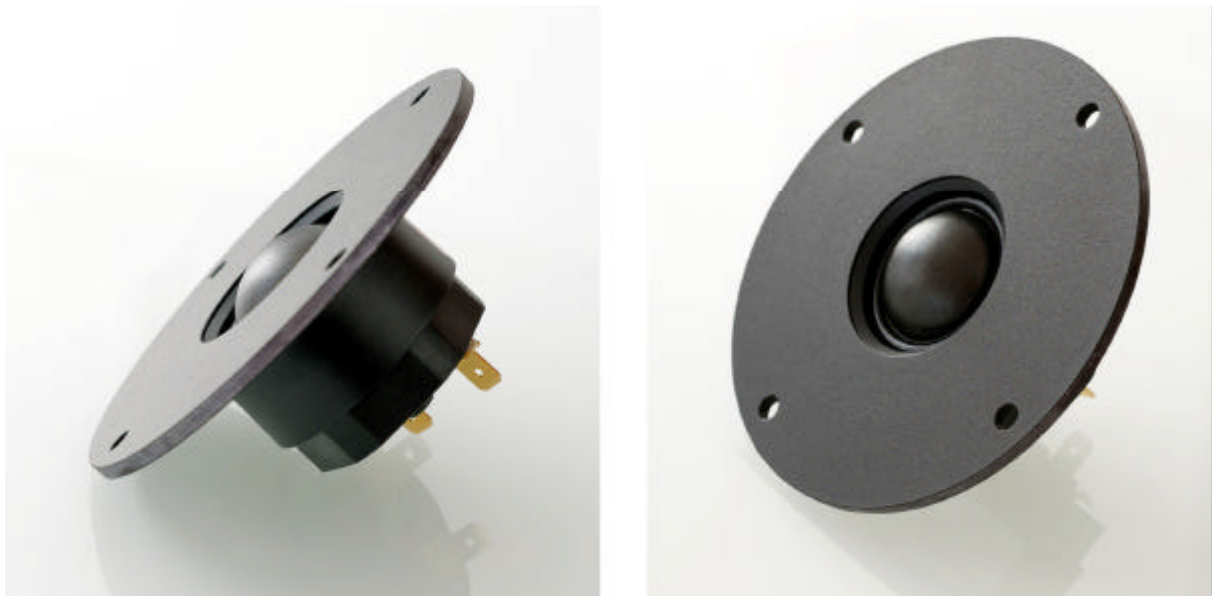
Features

The Tweeter

Our neodymium tweeter is a descendant of our coax technology, a result of permanent evolutionary development

Over the years Vienna Acoustics had found the best sounding tweeter, a refined development in cooperation with the danish specialists from ScanSpeak. But the superior technology is the point source, and that tweeter was too big, so over the last 2 years the goal was to develop a neodymium version which sounds the same as the reference or better. This was not only achieved, but on the way a super-tweeter extension was realised, with outstanding resolution without compromising the smooth and natural overall characteristics of the original tweeter. Originally developed with neodymium magnets to decrease its size with zero compromise, it is unmatched in uncoloured and neutral sound as the stand alone version as well.

The filter for the tweeter is an especially "soft" Bessel of 2nd order, the midrange works 6dB (first order, one aircoil) with impedance compensation for the voice coil inductivity.



The Bass Array

Three 7" Spidercone bass drivers (or ULF, Ultra Low Frequency, drivers) – also found in our famed LISZT speaker -, feature a reworked motor assembly and revised placement of the X3P ribs, providing increased output, extension and control.

The huge surface area that results from the use of three of these extraordinary drivers means effortless reproduction of extreme bass dynamics with articulation and force.

Our cabinet utilizes several braces that divide the cabinet into two different chambers, one with a single woofer and the other with two woofers, each vented and uniquely tuned. The two lower units produce the lowest bass, working in parallel, while the single driver provides ideal transition to the midrange driver.

This configuration results in tremendous bass extension with speed and liquidity.



The Midrange Driver

The midrange driver of our Beethoven Concert Grand *Symphony Edition* features a cone with the Vienna Acoustics proprietary mixture "X3P" of TPX and 3 polypropylene based synthetics, for maximum inner damping.

It combines the precision and transparency of hard cones - such as stamped metal - with the smoothness and musicality of softer materials. One of the secrets is the right share of polypropylene which gives the optimum in stiffness and inner damping ratio.

The inverted rubber surround provides the optimum of no-loss damping.



The Crossover Unit

Beethoven Concert Grand *Symphony Edition* demanded new development and design, using only the finest, selected components.

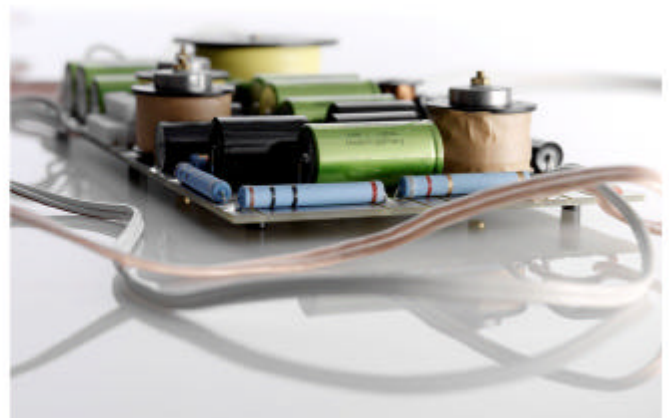
The final sonic improvements as a result of these collective changes are greater clarity, speed as well as greater bass extension without giving up any of the famed musical quality and rhythm inherent in all our designs.

All of our individual crossover components are of the highest quality, chosen exclusively by listening tests. As a result, our designs feature very expensive handpicked capacitors, and metal-oxyd-film resistors with less than 1% tolerance are chosen for their freedom from inductance.

The differences in resolution and spaciousness between capacitors that have identical measurements and identical material, but are produced by different manufacturers, can vary unbelievably. While our crossover components are chosen purely on the basis of their contribution to sound quality, we have identified another area of sonic variance in other designers' speakers.

Even the tiniest variations in coil inductance may dramatically affect width and depth reproduction in the soundstage. We have eliminated this issue by winding our special air core inductors using a specially designed robot able to hold a tolerance of only 0.7%. The resulting improvement is decidedly worth the effort.

Our massive, custom-made gold / silver plated binding posts, also found in our Reference Series, are designed to assure lowest transition resistance and accept banana plugs, spade terminals or bare wire connection.



The Base Assembly

Our new Beethoven Concert Grand *Symphony Edition* features a brandnew base-foundation. The carefully manufactured device is created by using a high-pressure aluminium die-casting and designed for greatest stability and optimized decoupling of the speaker.

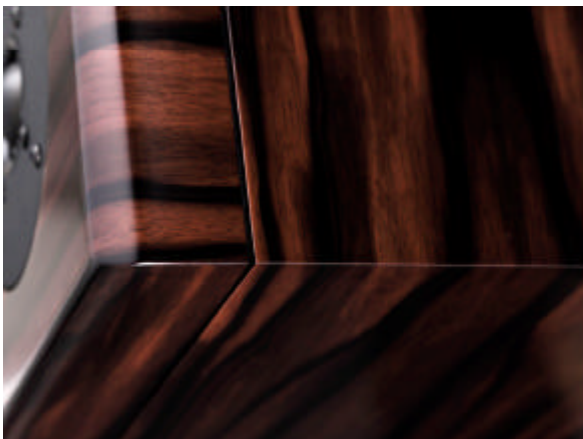


The Fit and Finish

As with all our models of the Concert Grand Series speaker systems, we have perfected a real-wood veneer process that to our opinion is exclusive and unrivaled: the membrane press / handcrafting veneer wrapping technique.

Through years of experience working with real wood and real-wood veneer techniques, especially for curved baffles, Beethoven Concert Grand *Symphony Edition* is meticulously handcrafted to the highest standards of quality in Vienna, Austria, with each finished speaker matching the reference within 0.3 dB, to ensure the most effortless and natural performance from every speaker that leaves our factory.

Available in true Piano Black and Piano White, as well as in sustainably sourced Cherry and Premium Rosewood veneer finishes.



Specifications

Impedance	4 Ohms
Frequency Response	28-22000 Hz
Sensitivity	91 dB
Recommended Amplifiers	50 - 300 Watts
Drive Units	
7" Woofer (3)	XPP "Spidercone"
6" Midrange	X3P Cone
Tweeter	1.1" Hand Coated/ Neodymium VA Silk Dome
Bass System	Bass Reflex
Bass Function	Impulse Optimizing QB 3 (Quasi-Butterworth)
Crossover Components	MKP Capacitors, 1% tolerance Coils 0,7% tol., Midrange/Tweeter Section Air Coils, Special Powder Core for Bass Section Metal Film Resistors 1% tol., Inductance Free
Crossover Function	3-way, 6 dB and 12 dB Bessel
Weight per Pair	144 lbs
Dimension (W x H x D) inches	7,5 x 42,7 x 15,7 (without base assembly) 11,5 X 45,1 X 15,7 (with base assembly)
Dimension (W x H x D) mm	190 x 1085 x 400 mm (without base assembly) 292 x 1145,5 x 400 mm (with base assembly)

Optimized aluminum counter-nut spike assembly included.

Finishes Cherry, Premium Rosewood, Piano Black and Piano White

